

Product Description

- ◆ Zero-crossing
- ◆ SCR Output
- ◆ AC Input Control
- ◆ Dielectric Strength: 4000Vrms
- ◆ LED Indicator
- ◆ Protective cover IP20



Ordering Information

KSI	600	A	60	-L	(134)
KSI Series	Load Voltage 600: 600VAC	A: AC Control	Load Current 60: 60Amp	LED Indicator	Customized Code

Technical parameters

Input Specifications (Ta=25°C)	
Control Voltage Range	90-280VAC
Must Turn-on Voltage	90VAC
Must Turn-off Voltage	10VAC
Maximum Input Current	25mA(@280VAC/50Hz)

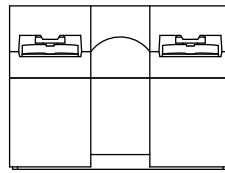
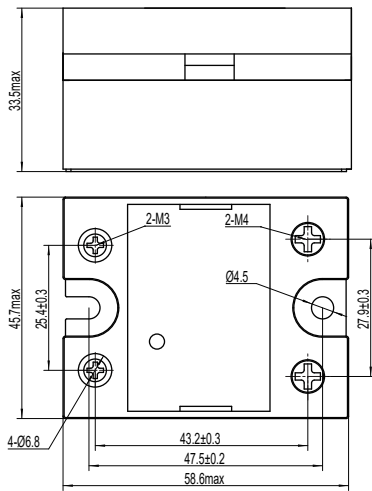
Output Specifications (Ta=25°C)	
Load Voltage Range(47~63Hz)	48-660VAC
Load Current Range	0.1-60A
Maximum Turn-on Time	40ms
Maximum Turn-off Time	40ms
Maximum Surge Current(@10ms)	700A
Maximum I ² t for Fusing(@10ms)	2450A ² s
Transient Overvoltage	1600Vpk
Maximum Off-State Leakage Current@Rated Load Voltage	1mA
Maximum On-State Voltage Drop@Rated Current	1.5Vrms
Minimum Off-State dv/dt @Maximum Rated Voltage	500V/μs

Technical parameters

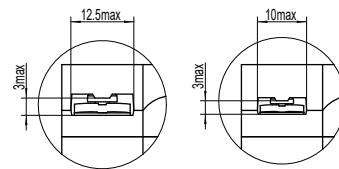
General Specifications (Ta=25°C)

Dielectric Strength(50Hz/60Hz)	Input/Output	4000Vrms
	Input, output/Base	2500Vrms
Minimum Insulation Resistance(@500VDC)		1000MΩ
Ambient Temperature Range		-30°C ~ +80°C
Storage Temperature Range		-30°C ~ +100°C
Weight (Typical)		120g

Outline Dimensions

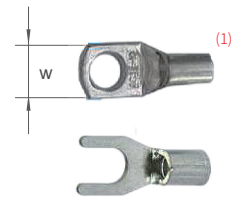


KSI (134) Outline Dimensions



Output

Input



Ring terminal dimensions:

Input: W=9.5mm max.

Output: W=12mm max.

Wire dimension

Input: 3mm² max

Output: 2x7mm² max

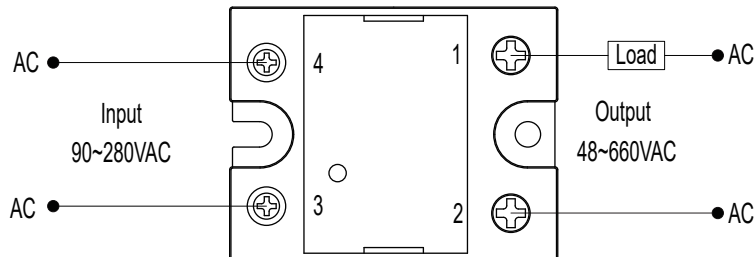
Torque

Input: (0.58~0.98)N·m

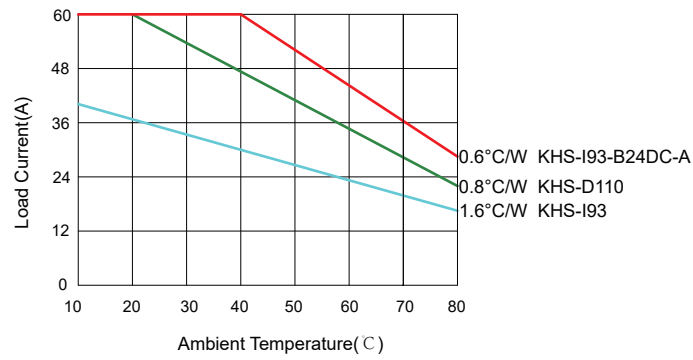
Output: (0.98~1.37)N·m

Note: (1)When SSR is connected to the cold rolled copper nose of TYPE TO1, the IP20 protection cover shall be removed first. After wiring is completed, install the IP20 protection cover.

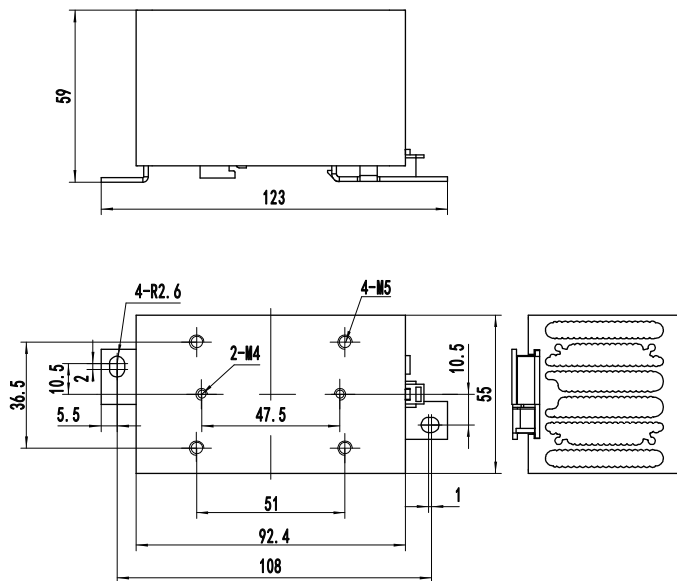
Wiring Diagram



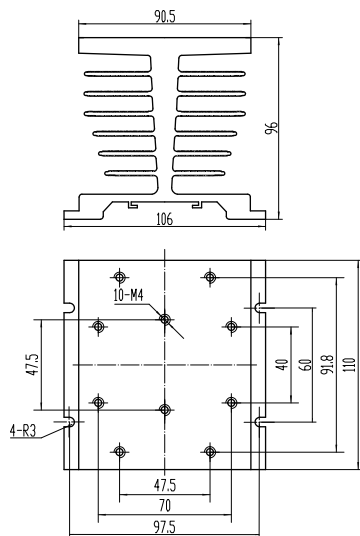
Thermal Derating Curve



The above temperature curve is configured with radiator models as follows:



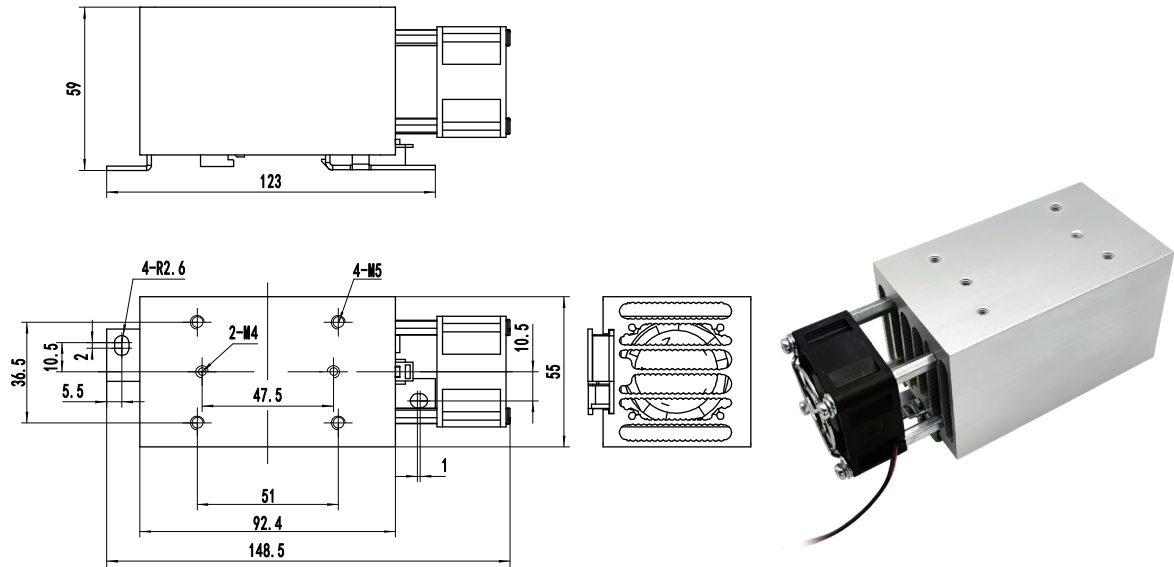
KHS-I93-D-A



KHS-D110



Wiring Diagram



KHS-I93-B24DC-A

General Notes

1. Relay must be mounted to proper sized heat sink based on thermal curves. Thermal grease or a thermal pad must be used between relay and heat sink and be torqued down to 0.98~1.37 N·m.
2. When connection wiring to SSR, please ensure screws are torqued down properly (input 0.08~0.98 N·m, output 0.98~1.37 N·m).
3. SSR's carrying load capacity is related to the operation ambient temperature and heat dissipation condition, please refer to the Thermal Derating Curve for derating.

! Warnings

1. The product's side panels may be hot, allow the product to cool before touching.
2. Disconnect all power before installing or working with this equipment.
3. Verify all connections and replace all covers before turning on power.