

**Product Description**

- ◆ MOSFET Output
- ◆ Low Impedance
- ◆ Control Voltage: 24VDC
- ◆ Panel Mounted
- ◆ LED Indicator
- ◆ RoHS Compliant



**Ordering Information**

KSJR	30	D	75	-24	(XXX)
KSJR Series	Load Voltage 30:9-28.8VDC 60:9-60VDC	DC Control	Load Current 40:40Amp 60:60Amp 75:75Amp	Control Voltage 24: 9.6-28.8VDC	Customized Code

**General Specifications**

Input Specifications (Ta=25°C)	
Control Voltage Range	9.6-28.8VDC
Must Turn-on Voltage	9.6VDC
Must Turn-off Voltage	2VDC
Maximum Input Current	15mA
Maximum Reverse Voltage	-24VDC

Output Specifications (Ta=25°C)		
Load Voltage Range	30VDC	9-28.8VDC
	60VDC	9-60VDC
Maximum Transient Voltage	30VDC	30VDC
	60VDC	60VDC
Load Current Range	40A	0.002 - 40A
	60A	0.002 - 60A
	75A	0.002 - 75A
Maximum Surge Current[@10ms]	40A	120A
	60A	180A
	75A	225A
Maximum Turn-on Time		5ms
Maximum Turn-off Time		10ms
Maximum Off-State Leakage Current@Rated Load Voltage (mA)		0.1mA
Maximum On Resistance		3mΩ max. (@TA=25°C)

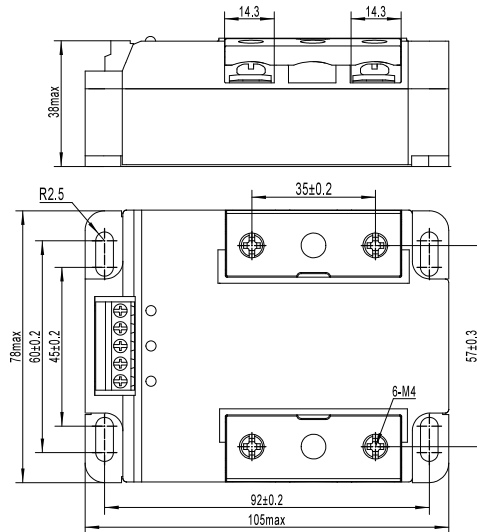
General Specifications

General Specifications (Ta=25℃)		
Dielectric Strength[50/60Hz]	Input & Output / Base	2000Vrms
Minimum Insulation Resistance (@500VDC)	Input & Output / Base	1000mΩ
Operating Temperature Range		-30℃ ~ +80℃
Storage Temperature Range		-30℃ ~ +100℃
Weight[Typical]		360g
LED Light	Forward	Green
	Reverse	Red

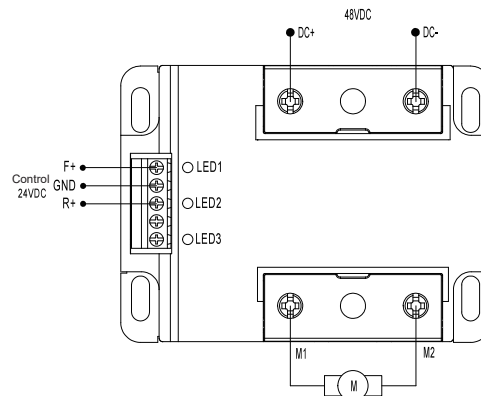
Application

DC motor control

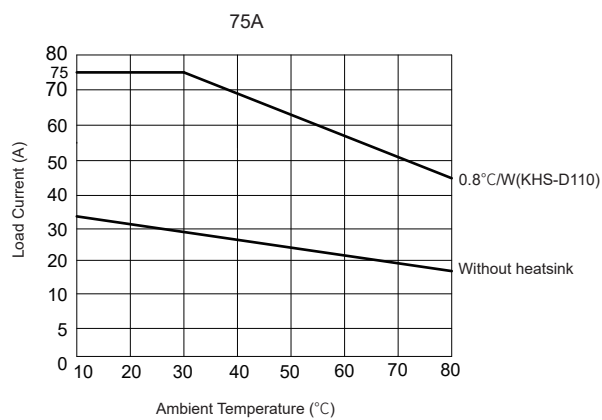
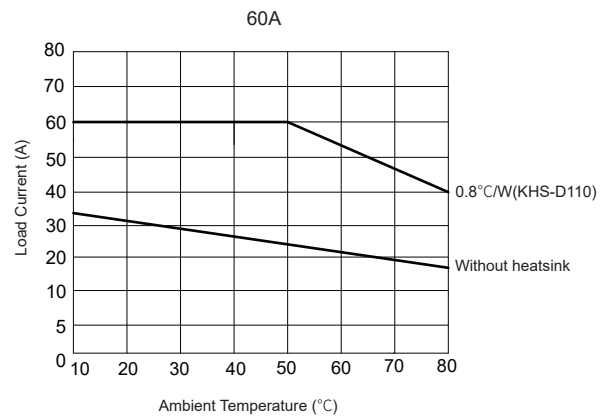
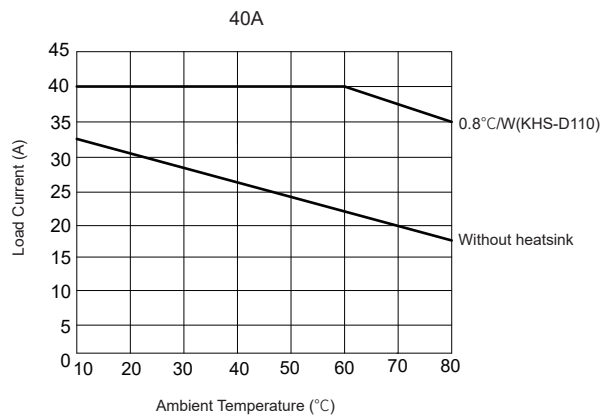
Outline Dimension



Wiring Diagram



Temperature Curve



Note: When the product is operated without heatsink according to the thermal derating curve shown on the datasheet, it is recommended to install the product on a metal plate for better heat dissipation.

General Notes

1. Relay must be mounted to proper sized heat sink based on thermal curves. Thermal grease or a thermal pad must be used between the relay and the heat sink.
2. When connecting wiring to SSR please ensure screws are torqued down properly. Recommended torque for input screw is 4.43/(0.2-0.5) in-lb/N·m, output screw is (18-20)/(2.0-2.2) in-lb/N·m.
3. When the operation temperature is above 25 C , please consider the derating as per the Thermal Derating Curve.
4. Please ensure reliable grounding when using the SSR.
5. Control polarity must be observed. Otherwise, it may cause damage to the relay.

Warnings

1. The product's side panels may be hot, allow the product to cool before touching.
2. Disconnect all power before installing or working with this equipment.
3. Verify all connections and replace all covers before turning on power.